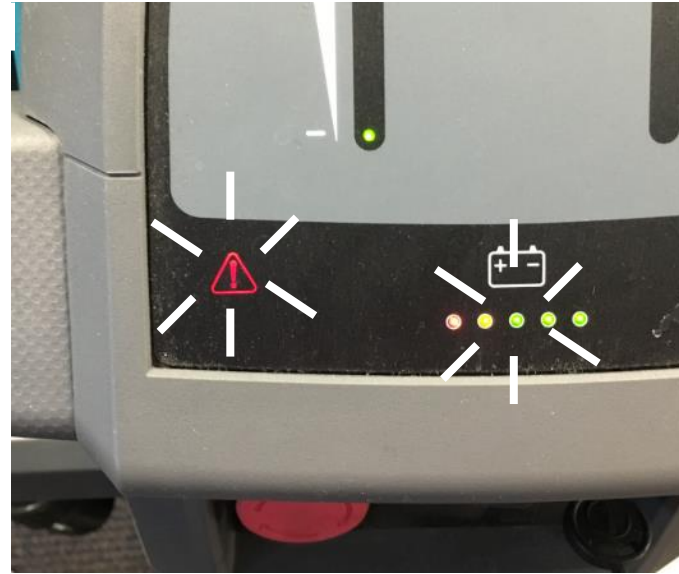
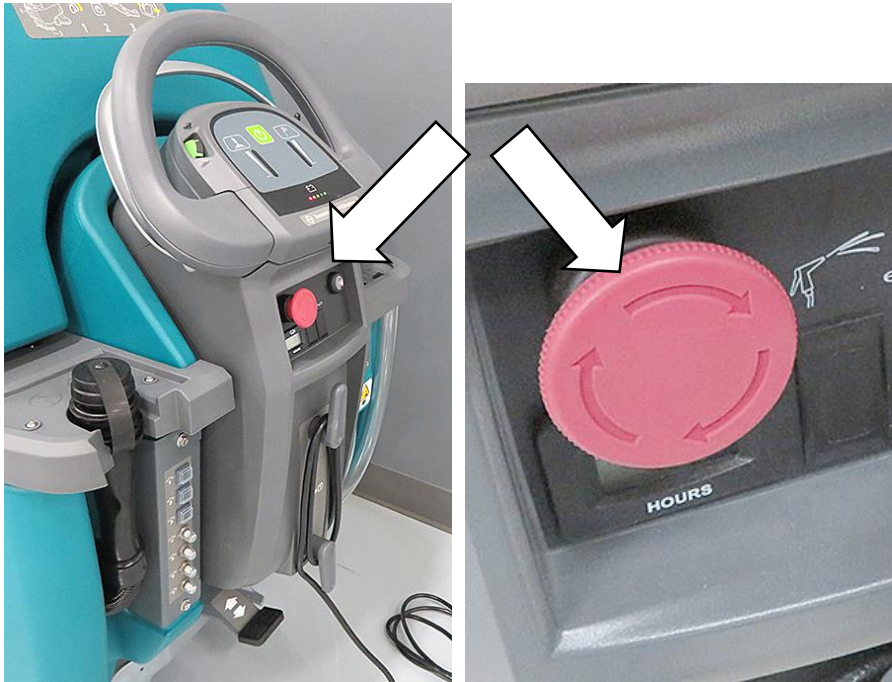
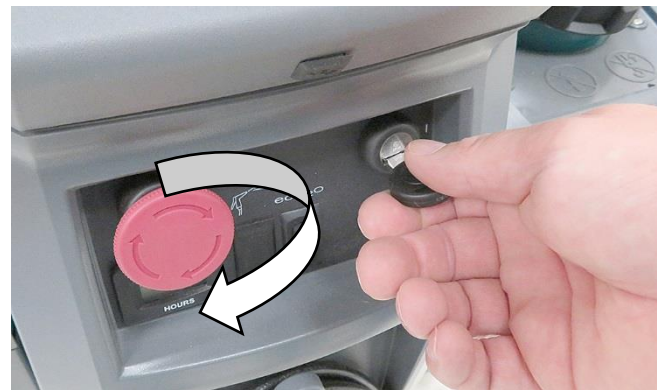


EMERGENCY STOP BUTTON

Push the emergency shut-off button in the event of an emergency. This red button shuts off all power to machine. When this button is engaged, the red service indicator and all 5 lights in the battery discharge indicator will flash.



To regain power, turn the button clockwise and restart the key.



If this button engages accidentally, please follow the process above to clear the fault and start operating the machine.