



T260

WALK-BEHIND FLOOR SCRUBBER

English (EN)
Operator Manual



Model Part No.

SCN8000100E11-SCRUBBER [T260,50CM PAD ASSIST, NAM]

North America



For Parts Manual, visit:
www.tennantco.com/manuals

CN7001337
Rev.00(10-2023)

INTRODUCTION

This manual is furnished with each new model.

It provides necessary operation and maintenance instructions.



Read this manual completely and understand the machine before operating or servicing it.

This machine will provide excellent service. However, the best results will be obtained at minimum costs if:

- The machine is operated with reasonable care.
- The machine is maintained regularly - per the maintenance instructions provided.
- The machine is maintained with manufacturer supplied or equivalent parts.

To view, print or download manuals online visit

www.tennantco.com/manuals



PROTECT THE ENVIRONMENT

Please dispose of packaging materials and used machine components such as batteries in an environmentally safe way according to your local waste disposal regulations.

Always remember to recycle.

INTENDED USE

The automatic floor scrubber is intended for commercial use, for example in hotels, schools, hospitals, factories, shops, offices and rental businesses. It is designed to scrub hard floor surfaces (concrete, tile, stone, synthetic, etc.) in an indoor environment. This machine is not intended for cleaning carpets or sanding wood floors. Use only recommended pads/brushes and commercially available floor cleaning detergents. Do not use this machine other than described in this Operator Manual.

MACHINE DATA

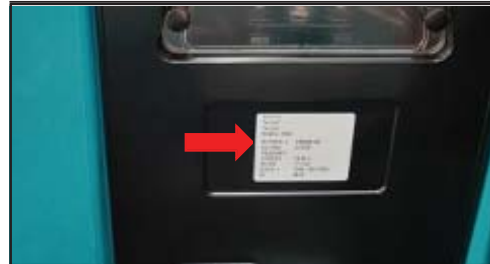
Please fill out at time of installation for future reference.

Model No. - _____

Serial No. - _____

Installation Date - _____

SERIAL NUMBER LOCATION



Tennant Company

10400 Clean Street

Eden Prairie, MN 55444- 2650

Phone: (800) 553- 8033

www.tennantco.com

Specifications and parts are subject to change without notice.


Copyright E2022 Tennant Company. All rights reserved.

CONTENTS

Safety Precautions4	Move the Machine24
Security Label6	Store the Machine24
Machine Components7	Troubleshooting25
Operation panel/control and instrument8	Troubleshooting — Continued26
Machine Installation9	Battery Charger Fault Code27
Install the Battery9	Machine Specifications28
How the Machine Works10	Machine Size29
Brush and Scouring Pad Information .10	T260 Recommended Spare Parts List28
Connect the Squeegee Assembly	
.....11	
Connect the Squeegee Assembly11	
Install Brush Plat.....11	
Pour the Solution into the Solution Tank.. 12	
Machine Operation13	
Check Before Operation.....13	
Start the Machine13	
During the Operation of the Machine14	
Battery Meter14	
Overload Reset Switch15	
Timer15	
Water Tank Drainage15	
Discharge Recovery Tank15	
Drain Solution Tank16	
Battery Charging16	
Use Battery Charger17	
Precautions for Battery Installation and Use17	
LED Lights Indicate Working Status18	
Machine Maintenance19	
Daily Maintenance19	
Weekly Maintenance21	
Maintenance Table22	
Squeegee Blade Replacement23	

IMPORTANT SAFETY INSTRUCTIONS - SAVE THESE INSTRUCTIONS

The following warning precautions are used throughout this manual as indicated in their description:

 **WARNING: To warn of hazards or unsafe practices which could result in severe personal injury or death.**

FOR SAFETY: To identify actions which must be followed for safe operation of equipment.

The following information signals potentially dangerous conditions to the operator. Know when these conditions can exist. Locate all safety devices on the machine. Report machine damage or faulty operation immediately.

 **WARNING: To Reduce the Risk of Fire, Explosion, Electric Shock or Injury:**

- Read manual before operating machine.
- Do not use or pick up flammable materials.
- Do not use near flammable liquids, vapors or combustible dusts.

This machine is not equipped with an explosion proof motor. The electric motor will spark upon start up and during operation which could cause a flash fire or explosion if machine is used in an area where flammable vapors/liquids or combustible dusts are present.

- Batteries emit hydrogen gas. Explosion or fire can result. Keep sparks and open flame away when charging.
- Disconnect battery cables and charger cord before cleaning and servicing machine.
- Do not charge batteries with damaged cord. Do not modify plug.

If the charger supply cord is damaged or broken, it must be replaced by the manufacturer or its service agent or a similarly qualified person in order to avoid a hazard.

- Do not use outdoors. Store indoors.
- Spinning pad/brush, keep hands away.

FOR SAFETY:

1. Do not operate machine:
 - Unless trained and authorized.
 - Unless operator manual is read and understood.
 - Unless mentally and physically capable of following machine instructions.
 - Under the influence of alcohol or drugs.
 - While using a cell phone or other types of electronic devices.
 - If not in proper operating condition.
 - In outdoor areas. This machine is for indoor use only.
 - In areas where flammable vapors/liquids or combustible dusts are present.
 - With pads or accessories not supplied or approved by Tennant. The use of other pads may impair safety.
 - In areas with possible falling objects.
 - In areas that are too dark to safely see the controls or operate machine
2. Before operating machine:
 - Check machine for fluid leaks.
 - Make sure all safety devices are in place and operate properly.
3. When operating machine:
 - Use only as described in this manual.
 - Report machine damage or faulty operation immediately.
 - Wear closed- toe, non- slip work shoes.
 - Reduce speed when turning.
 - Go slowly on inclines and slippery surfaces.
 - Do not scrub on inclines that exceed 9% grade or transport on inclines that exceed 21% grade.
 - Follow site safety guidelines concerning wet floors.
 - Follow mixing, handling and disposal instructions on chemical containers.
 - Do not carry passengers on machine.
 - Use care when reversing machine.
 - Keep children and unauthorized persons away from machine.
 - Do not allow machine to be used as a toy.

4. Before leaving or servicing machine:

- Stop on level surface.
- Set the parking brake, if equipped.
- Turn off machine and remove key.

5. When servicing machine:

- Disconnect battery connection and charger cord before working on machine.
- All work must be done with sufficient lighting and visibility.
- All repairs must be performed by trained personnel.
- Use Tennant supplied or approved replacement parts.
- Do not modify the machine from its original design.
- Do not jack up machine.
- Avoid moving parts. Do not wear loose clothing or jewelry and secure long hair.
- Do not disconnect the off-board charger's DC cord from the machine's receptacle when the charger is operating. Arcing may result. If the charger must be interrupted during charging cycle, disconnect the AC power supply cord first.
- Do not use incompatible battery chargers as this may damage battery packs and potentially cause a fire hazard.
- Inspect charger cord regularly for damage.
- Keep work area well ventilated.
- Avoid contact with battery acid.
- Keep all metal objects off batteries.
- Do not power spray or hose off machine.
- Use a hoist or adequate assistance when lifting batteries.
- Battery installation must be done by trained personnel.
- Wear personal protection equipment as needed and where recommended in this manual.

**For Safety: wear protective gloves.****For Safety: wear eye protection.****FOR SAFETY:**

1. Do not operate machine:

- Unless trained and authorized.
- Unless operator manual is read and understood.
- Unless mentally and physically capable of following machine instructions.
- Under the influence of alcohol or drugs.
- While using a cell phone or other types of electronic devices.
- If not in proper operating condition.
- In outdoor areas. This machine is for indoor use only.
- In areas where flammable vapors/liquids or combustible dusts are present.
- With pads or accessories not supplied or approved by Tennant. The use of other pads may impair safety.
- In areas with possible falling objects.
- In areas that are too dark to safely see the controls or operate machine

2. Before operating machine:

- Check machine for fluid leaks.
- Make sure all safety devices are in place and operate properly.


3. When operating machine:

- Use only as described in this manual.
- Report machine damage or faulty operation immediately.
- Wear closed-toe, non-slip work shoes.
- Reduce speed when turning.
- Go slowly on inclines and slippery surfaces.
- Do not scrub on inclines that exceed 9% grade or transport on inclines that exceed 21% grade.
- Follow site safety guidelines concerning wet floors.
- Follow mixing, handling and disposal instructions on chemical containers.
- Do not carry passengers on machine.
- Use care when reversing machine.
- Keep children and unauthorized persons away from machine.
- Do not allow machine to be used as a toy.

Security label

The safety labels appear on the machine in the locations indicated.
Replace labels if they are missing or become damaged or illegible.

⚠ WARNING



TO REDUCE THE RISK OF FIRE, EXPLOSION, ELECTRICAL SHOCK OR INJURY:

- Read manual before operating machine.
- Do not use outdoors. Store indoors.
- Do not use or pick up flammable materials.
- Do not use near flammable liquids, vapors or combustible dusts.
- Keep sparks and open flame away from batteries.
- Do not charge batteries with damaged cord.
- Disconnect battery cables and charger plug before servicing machine.

⚠ AVERTISSEMENT

POUR RÉDUIRE LES RISQUES D'INCENDIE, L'EXPLOSION, DE CHOC ELECTRIQUE OU DE LESSURE:

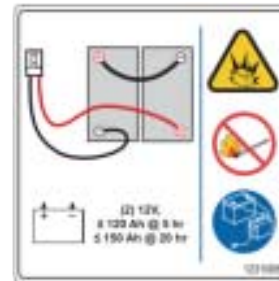
- Lisez le manuel avant d'utiliser la machine.
- Ne pas utiliser à l'extérieur. Entrepousez à l'intérieur.
- Ne pas utiliser ni cueillir des matériaux inflammables.
- Ne pas utiliser à proximité de liquides, vapeurs ou poussières combustibles inflammables.
- Évitez les étincelles et les flammes nues près des batteries.
- Ne chargez pas les batteries avec un cordon endommagé.
- Débranchez les câbles des batteries et le cordon du chargeur avant l'entretien de la machine.

⚠ ADVERTENCIA

PARA REDUCIR EL RIESGO DE INCENDIO, EXPLOSION, CHOQUE ELECTRICO, O LESIONS:

- Lea el manual antes de utilizar la máquina.
- No utilizar en exteriores. Almacenar en el interiores.
- No utilice ni recoja materiales inflamables.
- No use cerca de líquidos inflamables, vapores o polvos combustibles.
- Mantenga las chispas y las llamas abiertas lejos de las baterías.
- No cargue las baterías si el cable está dañado.
- Desconecte los cables de la batería antes de realizar el servicio a la máquina.

1267414



LABEL:
BATT CABLE CONNECT
Located inside of the tank



WARNING LABEL -
DO NOT STEP.
Located on scrub head.

T260 MACHINE COMPONENTS



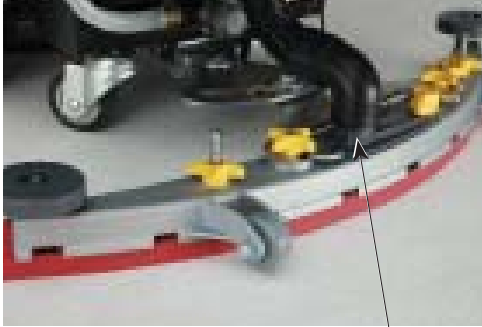
12



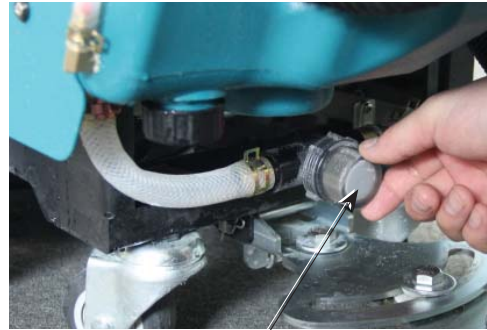
13

- 1. Recovery tank cover
- 2. Clear water inlet
- 3. Brush plate motor
- 4. Brush plate
- 5. Waterproof skirt
- 6. Big casters
- 7. Squeegee assembly

- 8. Charger interface
- 9. Squeegee lifting handle
- 10. Brush Plate lifting pedal
- 11. Sewage pipe
- 12. Energy-saving mode switch
- 13. Water outlet of water tank



14



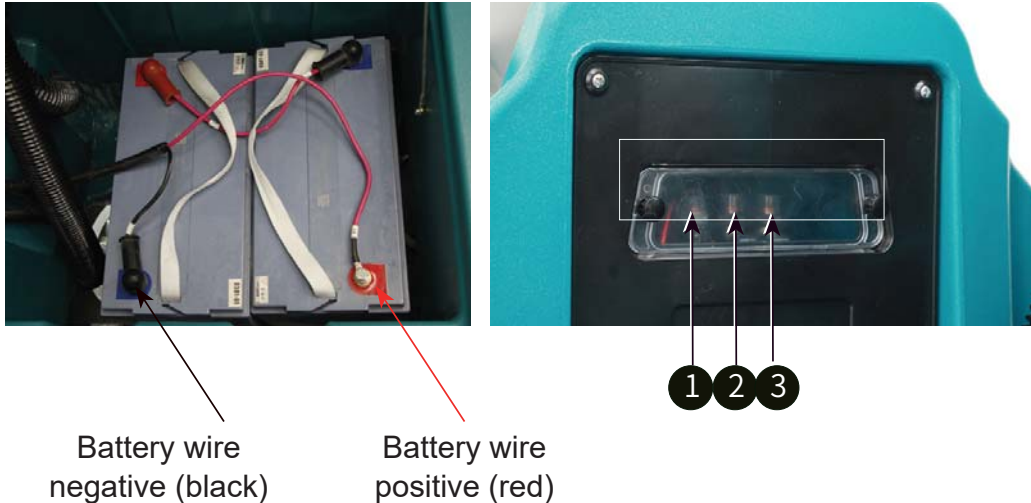
15

14.Suction pipe

15.Clean water filter screen

Operation panel/control and instrument





- ① Brush plate Circuitbreaker, Resetable
- ② Water suction Circuitbreaker, Resetable
- ③ Control circuit Circuitbreaker, Resetable

Machine Installation

Unpack the Machine

1. Check carefully whether there is any damage on the machine packing box. If there is any damage, please report it to the carrier immediately.

2. Check the shipping content list, if there are any missing items, please contact the dealer.

Freight Content:

- 2-12 volt battery
- 100-240VAC 15A smart charger
- Ø 6 square wire, 36 cm long battery wiring
- 4 plastic sleeves for battery wiring
- One squeegee assembly
- One pad driver and one scrubber pad(or one Brush)

3. Before unpacking the machine, please first remove the iron fixing parts on the casters. With the assistance of others, please carefully unload the machine from the shelf.

Note: If the loading and unloading platform is not used, please do not push the machine directly, so as to avoid damage to the machine.

Install the battery

Warning: Batteries emit hydrogen gas. Explosion or fire can result. Keep sparks and open flame away when charging.

For safety: when repairing the machine, please wear protective gloves and eye protection equipment when handling the battery and battery wiring.

Avoid contact with battery acid (if applicable to this battery type).

Recommended battery specifications:

Two 12 V, 135AH/C20 maintenance-free batteries.

The maximum volume of the battery: 13.1 in X 6.90 in X 8.43 in

1. Park the machine on a level ground, turn off all power switches and take out the key.

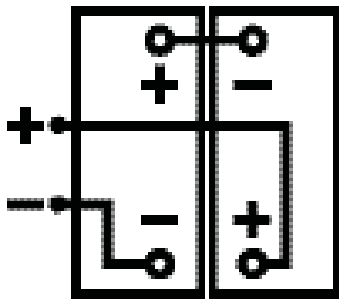
2. Raise the recovery tank so that the battery compartment can be reached. (As shown below).



3. Carefully install the battery in the battery compartment, and arrange the battery terminals as shown in the figure below (Figure 2)

4. Connect the battery wiring to the battery terminal, as shown in the figure (as shown below)

Connect red to positive (+) and black to negative (-).



How the Machine Works

Cleaning Method:

Water and detergent flow to the brush plate and the ground through the water valve and solenoid valve. Use detergent and water to clean the floor by rotating the brush plate. When the machine is moving forward, the generated sewage is sucked into the recovery tank through the squeegee assembly and the suction motor.

Brush and Scouring Pad Information

To ensure the best results, please use the appropriate type of brush when cleaning.

The brushes and scouring pads recommended for T260 are as follows:

Brush plate: 500mm 19.5"
Malish scrubbing brush

Polishing pad (white)-used to maintain a highly smooth or polished floor, and drain the water first, then clean it to prevent scratching the floor.

Cushion pad (red)-used to scrub light dirt without hurting the ground.

Scrub pad (blue)-used to scrub moderate to heavy dirt. Wipe away dirt, stains and wear marks, and make the floor surface clean for recoating.

Sanding pad (brown)-used to remove the coating on the floor surface for recoating.

Gravity sanding pad (black)-used for strong removal of heavy coatings or substrates, or for super-strong scrubbing.

Connect the Squeegee Assembly

For Safety: Before leaving or servicing machine, stop on level surface, turn off machine, remove key and set parking brake if equipped.

Connect the Squeegee Assembly

1. Park the machine on a level ground and turn off all power.
2. Raise the squeegee bracket (as shown in the figure below).



3. Install the squeegee assembly on the squeegee mounting bracket (as shown in the figure below). Be sure to put the tightening knob completely into the slot before tightening the knob.



4. Connect the suction pipe to the squeegee assembly. As shown in the figure (as shown in the figure below).



Install Brush Plate

For safety: Before installing the brush plate or pad holder, please park the machine on a level ground, turn off all power switches and remove the key.

1. Park the machine on a level ground and turn off the power.

2. Step down the pedal of the brush plate motor and move it to the right (as shown by the arrow) to raise the brush plate motor (as shown in the figure below).



3. Place the brush plate in the center of the brush plate cover, hold the brush plate upward with both hands in balance, and put one pin on the brush plate into the brush buckle installation hole through the observation port, and shake it from side to side, so that the other two pins also enter the hole of the brush buckle. When the brush plate is balanced, then immediately forcefully rotate counterclockwise, and snap into the brush buckle by inertia (as shown in the picture below).



For safety: When using the machine, please follow the mixing ratio and the instructions on the chemical container.

Pour the Solution Into the Solution Tank

The front of the machine is equipped with a bucket water injection hole, and the solution is injected into the solution tank (as shown in the picture below).



For scrubbing method: use warm water (maximum 60°C). Pour the recommended detergent into the solution tank for mixing.

Note: If you pour the solution into the solution tank with a bucket, make sure that the bucket is clean. Do not use the same bucket for filling solution and discharging sewage.

Note: For scrubbing method, please always use the recommended commercial detergent. If the machine is damaged due to improper use of detergent, (remember not to use granular detergent, such as washing powder), the manufacturer will not be responsible for the warranty.

Warning: Pay attention to the risk of fire or explosion, and do not use flammable liquids.

Machine Operation

For safety: do not operate the machine before reading and understanding the operation manual.

Warning: watch out for fire or explosion hazards. Do not operate the machine near or in a place with flammable liquid, gas or flammable dust.

Check Before Operation

- Clean up the solid garbage on the ground.
- Check the battery capacity scale of the battery meter (refer to "Battery Meter" on Page 15).
- Check the wear condition of the brush.
- Check the wear condition of the squeegee blade and adjust the angle appropriately.
- Make sure that the recovery tank is empty and the collection basket is clean and well-installed.

Start the Machine

1. Start the power supply and turn on the main power switch (as shown in the picture below).



2. Step on the lifting pedal of the brush plate and move to the left (as indicated by the arrow), and turn on the brush plate switch (as shown in the picture below).



3. Put down the lifting handle of the squeegee to make the squeegee assembly to the ground (as shown in the picture below), and the water suction motor works.



4. Manually adjust the valve, adjust the amount of water output. After adjusting it to the appropriate position, push the machine to start cleaning (as shown in the picture below).



5. To stop the cleaning switch, please turn off the brush plate, raise the brush plate. After the scrubber walks for a certain distance, raise the squeegee lifting handle to make the squeegee in the raised state, and then turn off the main power switch.



During Machine Operation

Warning: To avoid the risk of fire or explosion, do not pick up flammable materials or reactive metals.

For safety: When using the machine, please walk slowly and wear non-slip shoes when encountering slopes and slippery surfaces.

1. Each cleaning path overlaps by 5 cm.

2. Keep the machine moving so as not to damage the ground.

3. Clean the cleaning area beforehand to avoid. If there are drag marks on the floor after the squeegee absorbs water, please wipe the blade with a rag to remove the garbage.

4. Do not operate the machine on a slope with a slope of more than 2% .

5. If there is too much foam, please pour the recommended commercial defoamer into the recovery tank.

Note: Do not let bubbles enter the sewage filter in the recovery tank to avoid damage to the suction motor.

6. For extremely dirty areas, please use the double cleaning method to clean. Raise the squeegee for cleaning, let the solution soak for 3-5 minutes, then lower the squeegee and clean it again.

7. When the staff leave the machine, please raise the squeegee and brush plate, turn off all power switches and remove the key.

8. Do not operate machine in areas where the ambient temperature is above 110°F/43°C or below freezing 32°F/0°C.

Battery Meter

The battery meter shows the power of the battery. When the battery is fully charged, all indicator lights are on. As the power is consumed, the indicator lights will turn off from right to left (as shown in the figure below)

Note: In order to extend the life of the battery, please be sure to charge the battery in time after the machine is used.

The power is divided into 7 grids, all of which are green, and decrease as the power decreases. When the battery is completely out of power, it will prompt A03 warning. Please push the machine to the charging area to charge the machine immediately.



Charging Power Display



Timer

The timer will record the total number of hours that the brush plate motor is turned on. Please use the timer to determine when the recommended maintenance procedures should be performed and record the maintenance history (as shown in the figure below).



Indicates the total hours

Overload Reset Switch

The machine is equipped with a resettable overload reset switch to avoid damage to the brush plate motor. The overload reset switch is shown in the figure (as shown below).

When the overload reset switch triggers a power trip, please determine the cause of the power trip and let the motor cool down, and then manually press the overload reset switch button.

If the machine needs to be repaired, please contact an authorized service center.

Water tank drainage

The recovery tank should be drained and cleaned after each use.

For safety: Before leaving or repairing the machine, park the machine on a level ground, and then turn off the power switch of the machine.

Discharge Recovery Tank

1. Transport the machine to the drainage location and turn off the power.

2. Hold the drain pipe with the mouth upwards, remove the pipe cap and drain the water (as shown in the figure below).



Note: When using buckets to hold the sewage discharged from the recovery tank, do not use the same bucket to pour solution into the solution tank.

3. Disassemble and flush the sewage collection basket located in the recovery tank (as shown in the picture below).



To drain the remaining water in the solution tank, open the drain cover of the solution tank (as shown below).



Battery Charging

The following charging instructions apply to the charger that comes with this machine.

Note: In order to extend the life of the battery, please be sure to charge the battery in time after the machine is used to prevent damage to the battery due to long-term loss of power.

Battery Charger Specifications

- Charger type: fully automatic intelligent charger
- Maintenance-free battery
- Output voltage -24V
- Capacity -15Ah

Use Battery Charger

For operating instructions of the battery charger, please refer to the battery charger manual provided with the charger.

1. Move the machine to a well-ventilated place.

Warning: watch out for fire or explosion hazards. For safe use, please keep away from sparks or open fire sources.

2. Park the machine on flat and dry ground, raise the squeegee and brush plate, turn off all power switches and remove the key.

3. Insert the charger plug into the charging port of the machine and make sure that it is firmly connected.

4. Plug the AC (alternating current) power cord of the charger into a well-grounded power outlet.

Note: Once the battery charger is connected, the machine will no longer work.



Note: During the charging of the charger, please do not unplug the DC cable of the charger from the socket on the machine. In order to avoid arc discharge. If charging must be suspended during charging, please unplug the AC power cord first.

Precautions for Battery Installation and Use

1. Before using the battery,

check whether each battery is damaged, clean, and clearly marked, and clean the surface of the battery with a dry cloth; check the open circuit voltage of the battery, whether the positive and negative poles are clearly marked, and whether there is reverse polarity.

2. According to the requirements of the drawing, the battery shall be installed upright and not upside down. The distance between adjacent batteries shall be at least 5mm. After the installation is complete, check whether the positive and negative poles of each battery are correct according to the requirements of the installation drawing, and then connect each battery to the entire set with wires.

3. After all the batteries are installed, check whether each connection part is loose. When tightening the connection, remember do not use too much force or it will damage the pole. Generally, the tightening force should be no more than 15N•M.

4. When installing the battery in the whole vehicle, adjust the plug between the batteries to make the battery in an upright position and tighten the battery to prevent the battery from shaking and collision.

5. Electric door locks, fuse holders, etc. must be isolated from the battery during periods that are prone to sparks.

6. The battery leaves the factory in a charged state, and usually the user can directly load it into the machine. If the battery is left for a long time (more than 2 months), it should be charged according to the charging method before use.

7. The battery should not be close to fire and heat sources. It is

strictly forbidden to expose to direct sunlight in hot summer, and avoid violent vibration, collision and short circuit of the positive and negative electrodes of the battery.

8.The battery capacity is based on the ambient temperature of 25°C. The battery capacity will decrease by about 1% every time the temperature drops by 1°C. The influence of temperature should be considered during use, and the use of the battery in an environment below -10°C should be avoided.

9.The battery must not be disassembled at will in order to avoid danger.

10.Used batteries must be recycled and should not be

discarded at will, which may affect the environment.

11.When charging, pay attention to the battery temperature change to prevent overheating and damaging the battery, which may cause danger.

12.The battery must avoid working under long-term power loss, and the battery must be fully charged before use.

13.Remember not to charge the machine frequently or let the machine frequently work under power-deficient conditions, it is easy to damage the battery, and the manufacturer is not responsible for the battery damage caused by this kind.

Working Status of LED Indicator Light of Smart Charger

STATUS	LED (RED)	LED (YELLOW)	LED (GREEN)
STANDBY	ON	OFF	OFF
CHARGE BELOW 50%	FLASH	OFF	OFF
CHARGE 50%-75%	OFF	FLASH	OFF
CHARGE 75%-100%	OFF	OFF	FLASH
100% FULL	OFF	OFF	ON

Machine Maintenance

FOR SAFETY: Before leaving or servicing machine, stop on level surface, turn off machine and remove key.

FOR SAFETY: When servicing machine wear personal protection equipment as needed. All repairs must be performed by trained personnel.

To keep the machine in the best working condition, it is necessary to strictly follow the daily and weekly maintenance procedures.

Warning: pay attention to the risk of electric shock. Turn off the machine power switch.

Daily maintenance (after each use)

1. Drain and clean the recovery tank (as shown below).



2. Clean the collection basket (as shown below).



3. Step on the brush plate lifting pedal and move it to the right to lift the brush plate, turn off the brush plate switch, manually remove the brush plate, rotate the brush plate clockwise, and remove the brush plate with inertia and instant force (as shown in the picture below).



4. Clean the squeegee blade (as shown below). Place the squeegee in a raised position to prevent damage to the blade.



5. Check the wear condition of the edge of the squeegee blade (as shown in the picture below). If it is worn out, please switch the two ends of the blade. (Refer to "Squeegee blade replacement" on page 29)



6. Wipe the machine with a multi-purpose detergent and a damp cloth (as shown below). For safety: When cleaning the machine, do not use high-pressure spray or water pipe to flush the machine, which may cause electrical system failure.



7. In order to prolong the life of the battery, please charge the battery in time after the machine is used to prevent damage to the battery due to power loss (as shown below).

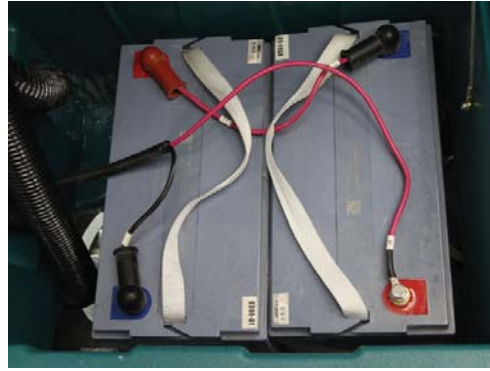


Weekly Maintenance

1. Remove the filter screen of the solution tank from under the machine and clean it (as shown below). Make sure to empty the solution tank before removing the filter screen.



2. Clean the top of the battery to prevent electrode corrosion, and check whether the battery wiring is loose (as shown below).



Maintenance every six months:
check the circuit system of the machine.

Maintenance Table

The table below indicates who is responsible for each procedure

O=Operator

T = Specially Trained Personnel

Interval Period	Responsible Person	Description	Procedure
Daily	O	Brush Plate/Pad Holder Scouring Pad	Check the Height of the Brush Plate/Pad Holder
	O	Recovery Tank	Check for Damage and Wear or Debris
200 Hours	T	Maintenance-free Battery Electrodes and Wiring	Check and Clean
500 Hours	T	Vacuum Motor	Check the Motor Carbon Brush (Check Every 100 Hours After the First 500 Hours of Operation)
	T	Brush Plate Motor	Check the Motor Carbon Brush (Check Every 100 Hours After the First 500 Hours of Operation)
	T	Big Casters	Check for Damage and Wear

Note: More frequent maintenance may be required under extreme dusty conditions.

Squeegee Blade Replacement

Each squeegee blade has four sides. When the blade is worn, you only need to exchange the two ends of the blade and use the other intact surface. If all four edges are worn, replace the blade.

1. Remove the squeegee assembly from the machine (as shown below).



2. Unscrew the two yellow nuts on the outside and turn them to the top. Turn the squeegee over and take out the blade (as shown in the figure below).



3. The blade is available on all sides. According to the wear condition of the blade, the blade can be replaced in the left and right directions for the first time to ensure that the blade hole is aligned with the buckle. After it is worn again, the blade can be exchanged up and down, the third time it can be exchanged left and right, and then the blade can be replaced. (As shown below).



Move the Machine

FOR SAFETY: When loading/unloading machine onto/off truck or trailer, use a ramp that can support the machine weight and operator.

FOR SAFETY: Do not operate the machine on a ramp incline that exceeds a 21% grade level.

When using a truck or trailer to move the machine, be sure to follow the following strapping procedures:

- 1.Raise the squeegee and brush head.
- 2.Use the recommended loading dock to load the machine.
- 3.Place the front of the machine close to the front of the truck or trailer. After the machine is stable, lower the brush head and squeegee.
- 4.place an obstacle behind each drive wheel to prevent the machine from sliding.
- 5.Use ropes to secure the top of the machine to prevent tipping. Brackets must be installed on the deck of the truck or trailer.

For safety: When moving the machine, please use the recommended loading dock to load and unload by truck or trailer. Use ropes to secure the machine to the truck or trailer.

Store the Machine

- 1.Charge the battery before storing. Do not store when the battery is exhausted. If the storage period is long, please make sure to charge the battery every 2-3 months to avoid long-term damage

to the battery.

2.Drain the water in the water tank and rinse thoroughly.

3.Store the machine in a dry place, and the squeegee and brush plate should be kept in the raised position.

4.Open the recovery tank cover to facilitate ventilation.

Note: Do not expose the machine to rain, it should be stored indoors.

5.If storing the machine at freezing temperature, follow the antifreeze instructions below.

Antifreeze

Pour all 1 gallon (4 liters) of antifreeze into the solution tank without diluting it.

For safety: Avoid contact of antifreeze with eyes. Wear protective glasses.

Important: Before operating the machine, rinse the antifreeze in the solution tank.

Troubleshooting

Problem	Reason	Solution
The machine cannot be operated	The switch is not open or damaged	Turn on the switch or replace the switch
	The brush plate motor button is not open or damaged	Turn on the switch or replace the switch
	Motor switch handle malfunction	Replace the micro switch
	The battery is dead or damaged	Please charge the battery or replace the battery
	Overload reset switch tripped	Remove the short circuit fault and press the overload reset switch
The charger is not working	The plug is not connected to the power supply	Check plug connection
	Wrong connection of positive and negative wires	Correctly connect the positive and negative poles
	Charger failure	Refer to the charger fault code
Brush plate motor does not work	The brush plate rises from the ground or the brush plate motor button is damaged	Replace the micro switch of the brush plate motor
	Damaged motor switch	Replace the motor micro switch
	Overload reset switch tripped	Troubleshoot, press the overload reset switch
	Motor carbon brush wear	Please contact the service center
	Loose brush plate motor connector	Re-fix the connector
	Damaged brush plate motor	Replace the motor
The machine cannot advance	Universal wheel damage	Replace the universal wheel
	Large caster damage	Replace the damaged large caster
	The brush plate angle is incorrect	Re-adjust the brush plate angle
The suction motor does not work	The micro switch at the lifting pedal of the squeegee is damaged	Replace the micro switch
	The micro switch wire is off	Reinsert the thread
	The motor inching button is damaged	Replace the micro switch
	The suction motor is damaged	Replace suction motor
Little water or no water outflow	Recovery tank is full	Drain sewage
	Filter screen of solution tank	Clean the filter screen of solution tank
	Broken water valve switch	Replace water valve switch
The drain valve is closed when the machine is stopped, and the water flow does not stop	The solenoid valve goes wrong	Replace solenoid valve
	Impurities in solenoid valve	Fill up the solution tank, open the water valve to the maximum, start the machine, use the water pressure to flush out the impurities in the solenoid valve [Repeat this step several times]
	The solenoid valve is damaged	Replace solenoid valve

Troubleshooting — Continued

Insufficient suction	The recovery tank is full or the suction pipe is broken	Drain the recovery tank or replace the suction pipe
	Sewage pipe cover is not sealed	Replace the drain pipe cover
	The sewage filter screen in the recovery tank is blocked	Cleaning the sewage filter screen
	Foreign matter in the seal of the sewage pipe cover	Remove foreign objects and re-cover the sewage pipe cover
	Squeegee blade is worn	Replace or exchange the squeegee blade
	The squeegee blade cannot be bent properly	Inspect the squeegee mount bracket for damage
	The suction motor is damaged	Replace suction motor
	Low battery	Battery charging
Reduced operating time	Low battery	Please fully charge the battery
	Battery failure	Replace the battery
	Battery needs maintenance	Refer to "Battery Maintenance"
	Battery charger failure	Repair or replace the battery charger

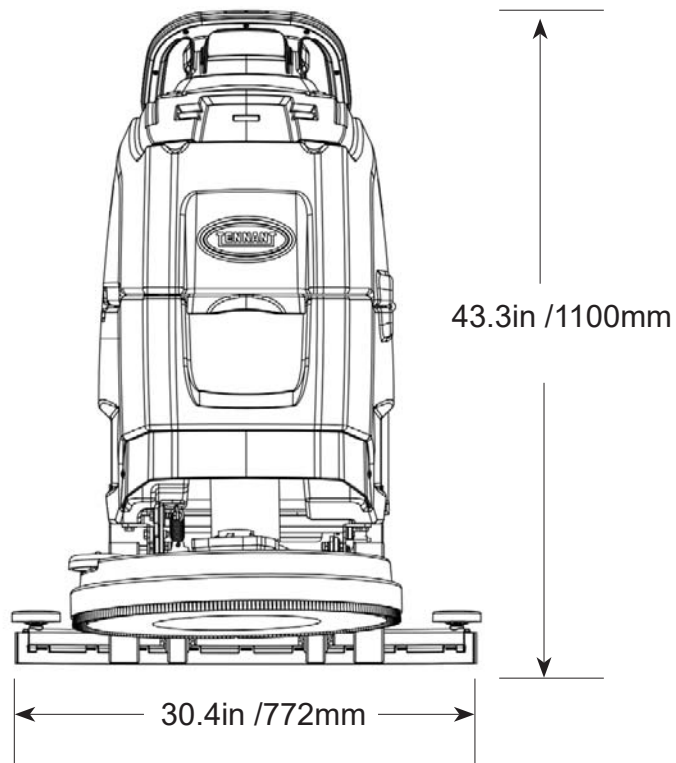
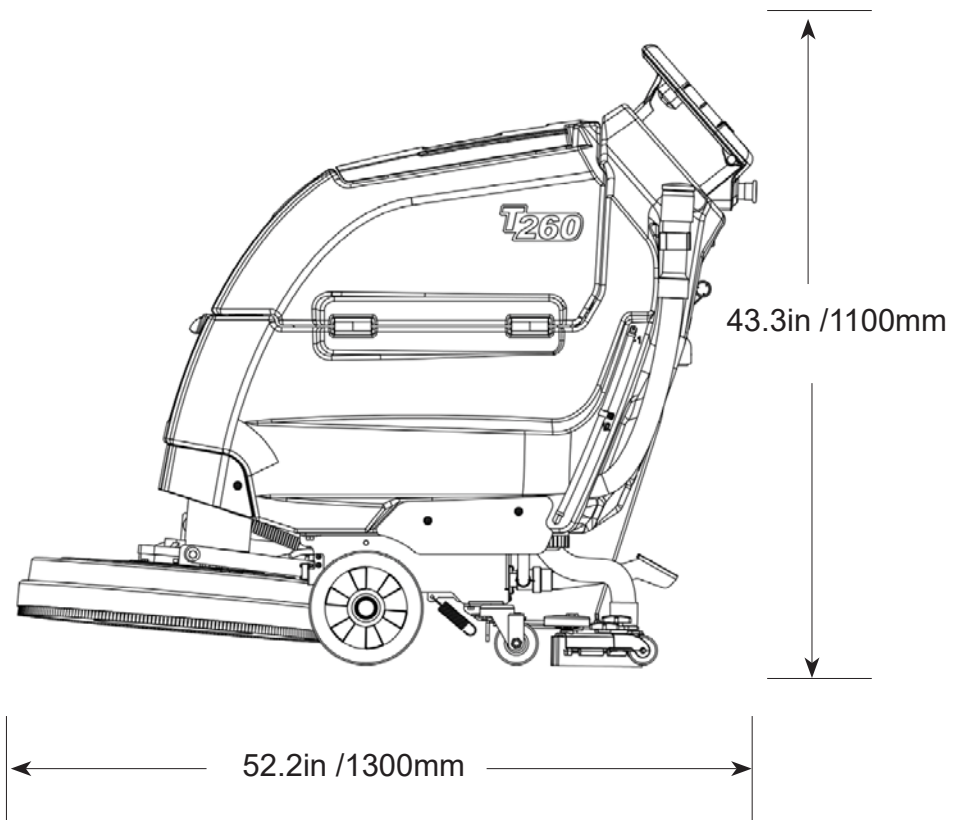
Battery Charger Fault Code

Code	Malfunction	Solution
LED2 is green and flashing	Battery voltage is lower than 22V	Use 24V, 15-25Ah to charge for half an hour and then use the smart charger for daily charging.
	The battery is inverted, charging less than 22.4V	
LED2 lights up red	Battery voltage is lower than 12V	The battery connector is not connected properly; the battery wiring problem
Remarks	1. The liquid-filled charger cannot charge the maintenance-free battery, and it is easy to burn the charger	
	2. The maintenance-free charger can charge the liquid-filled battery, but cannot be fully charged	
	3. If the voltage is lower than 22V, the smart charger will not work	
	4. The above faults are all for the new battery, if the old battery needs to be replaced and maintained	
	5. Under normal circumstances, if the battery power is insufficient, the battery indicator on the operation interface of the machine will warn. Please charge in time. If the battery is not charged for a long time, the above failure will occur	

MACHINE SPECIFICATIONS

MODEL	T260
Length	52.2in /1300mm
Height	43.3in /1100mm
Width/Frame	21.5in /545mm
Scrubbing Width	19.7in /500mm
Suction Width	30.4in /772mm
Brush Diameter	19.5"/495mm
Solution Tank Capacity	10.5gal/40L
Recovery Tank Capacity	11.5gal/45L
weight(W/O batteries)	157lb/71.5 Kg
Batteries Quantity	2
Voltage	24V
Rated Current	135AH/C20
Brush Plate Motor(VDC/KW)	24/0.55(0.74)
Water Suction Motor	24/0.40(0.54)
Charger (Smart Type)VDC	24
Charger (Smart Type)Ampere	15
Charger (Smart Type)Hertz	50
Charger (Smart Type)VAC	122-240
Noise	72dB(A)

Specifications are subject to change without notice.



T260 RECOMMENDED SPARE PARTS LIST

Part No.	Description
1069835	Cord, Power, Chrgr, 120vac
1203953	Blade, Sqge, Rear, 836l, Linatex[500mm] (Standard)
1203954	Blade, Sqge, Front, 788l, Linatex[500mm] (Standard)
1215609	Blade, Sqge, Rear, 836l, Urethane[500mm] (Optional)
1215610	Blade, Sqge, Rear, 836l, Gum[500mm] (Optional)
1215611	Blade, Sqge, Front, 788l, Urethane[500mm] (Optional)
1215612	Blade, Sqge, Front, 788l, Gum[500mm] (Optional)
1243338	Pad, Polish, 20.0d, White [5 Qty]
1243339	Pad, Buff, 20.0d, Red [5 Qty]
1243340	Pad, Scb, 20.0d, Blu [5 Qty]
1243566	Pad, Stripping, 20.0d, Brn [5 Qty]
1243661	Pad, Strip, 20.0d Blk, Hi Prod [5 Qty]
1243670	Pad, Surf Prep, 20.0d Maroon[5 Qty]
1251238	Battery, Agm, 12vdc 0135ah, Cn
9015730	Blade Kit, 500mm, Gum (Optional)
9015731	Blade Kit, 500mm, Linatex (Standard)
9015732	Blade Kit, 500mm, Urethane (Optional)
630477	Wheel, Pyu, 02.0D 0.38W, Gray (Squeegee)
1010560	Wheel, Bumper, 80d X 25w, Non-Marking (Squeegee)
CN4000673	Seal, Washer, 42.0mmd 22.0mb 11mml
CN4000699	Caster, Swivel
CN5002310	Wheel, Main, 200.0mmd 50.0mmw 42.0mmb
CN5001636	Fuse, 100a
CN5001643	Fuse, 5a
CN5001644	Fuse, 30a
CN5001647	Fuse, 25a
CN5002458	Fan, Vacuum
CN5005651	Motor, Brush
CN5001828	Carbon Brushes
CN5002145	Float, Level, Red, 6mm
CN5002833	Hose Assy, Drain, 38mmd 990mml
CN5002836	Hose, Sqge, Rear, 38mm Dia
CN5002865	Hose, Silicone, 8mmid X 12mmod
CN5003089	Sensor, Level, Liq
CN5003686	Gasket
CN5004320	Hose, Silicone, 13mmid X 19mmod
CN5004321	Hose, Silicone, 15mmid X 21mmod
CN5004736	Valve, Ball

Part No.	Filter, Mesh
CN5004741	Tray, Debris, Tank, Recvy
CN5005711	Cover, Debris, Tank, Recvy
CN5005723	Shaft Wldt, Axle
CN5006078	Cap, Tank, Soltn
CN5006220	Cap, Hub, Dust, 28.5mmd 10.8mml
CN5006221	Tray, Debris, Tank, Soltn
CN5006234	Cover, Skirt, Brush
CN5006241	Brush Assy, Disc, Scb, 50cmm, Nyl
CN5006244	Driver Assy, Pad, 50cm, 3 Lug
CN5006245	Seal, Strip, 420mm X 18mm X 7mm
CN5006246	Charger, 24v, 15ah
CN5006264	Pad, Strip, 20.0d Blk, Hi Prod [5 Qty]