



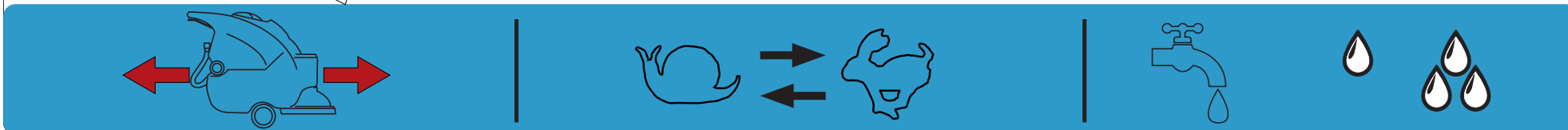
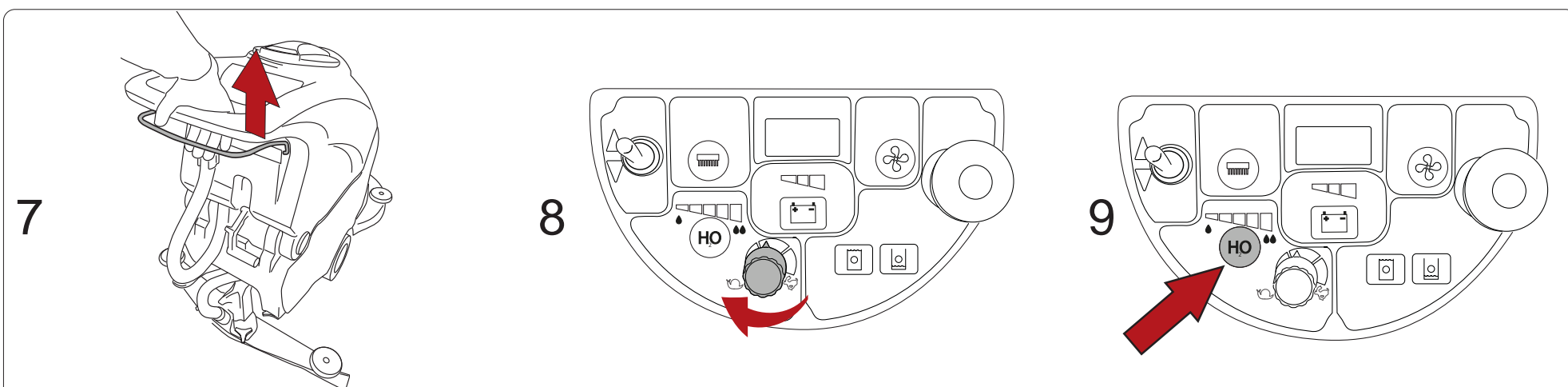
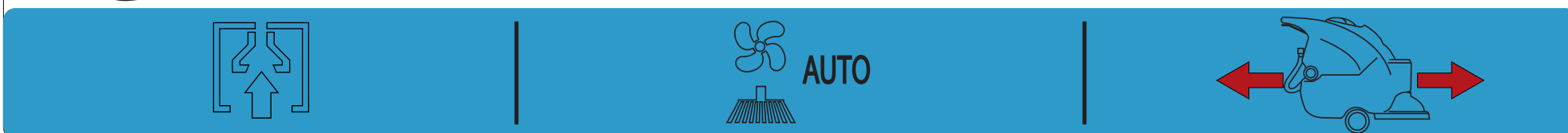
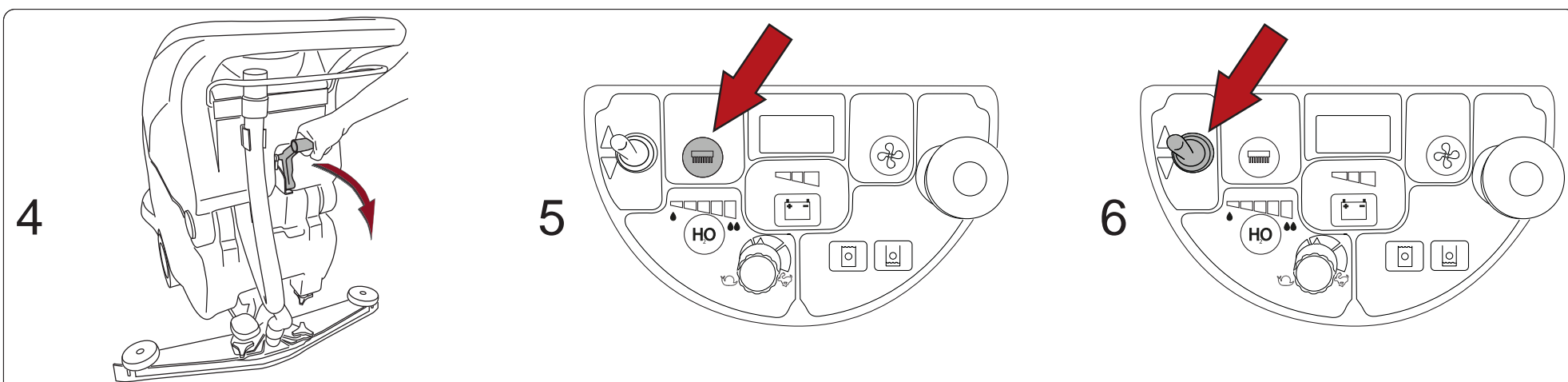
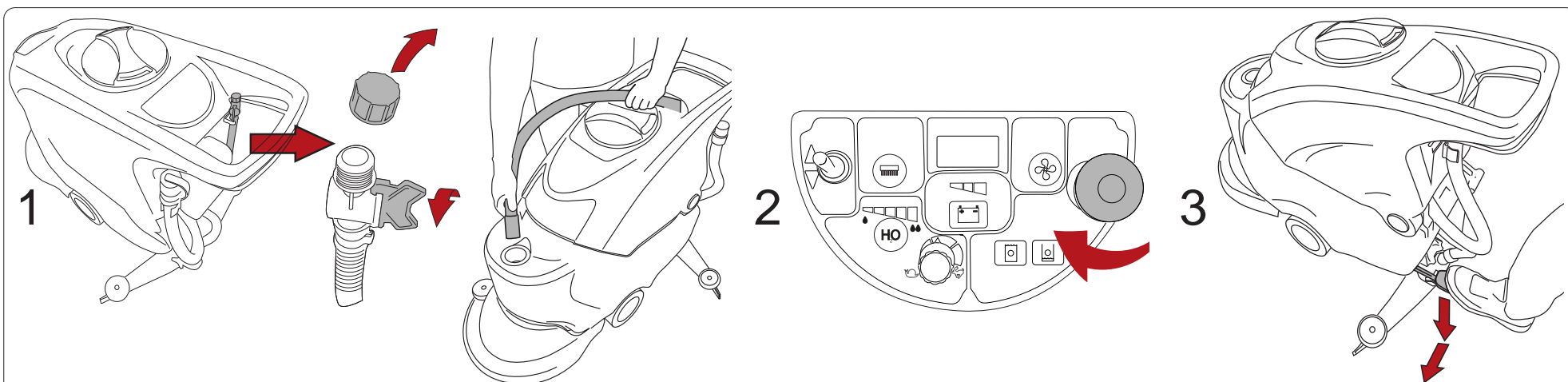
T390

Quick Guide

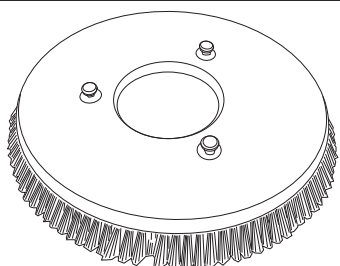


This guide is intended for quick consultation only and does not replace the user and maintenance manual. Before using the machine, read the user and maintenance manual contained in the machine's packaging thoroughly and strictly follow all the instructions.

PREPARATION & OPERATION



ATTACHING/REMOVING THE BRUSHES



Attaching the brush: raise the machine head by pushing the head lift pedal down and then to the right. Place the brushes under the head drive disk. Lift the right brush with your hands and turn it clockwise, locking it in position on the drive disk. Lift the left brush with your hands and turn it anticlockwise, locking it in position on the drive disk.

Removing the brush: raise the machine head by pushing the head lift pedal down and then to the right. Turn the right brush anticlockwise, releasing it from the drive disk. Turn the left brush clockwise, releasing it from the drive disk.



DAILY MAINTENANCE

| | | | |
|-----------------------------|--|--|--|
| | | | |
| Clean the dirty water tank. | Check the suction filter is undamaged and clean. | Check that the detergent outlet filter is clean. | Check that the brush is clean. Replace if necessary. |

| | |
|---|--|
| | |
| Check that the squeegee is clean and the blades are not worn. | |

REPLACING THE SQUEEGEE BLADES

Open the clip (Ref. 1).
 Remove the two blade retainers (Ref. 2) by pushing them outwards then extracting them.
 Remove the blade.
 Reuse the same blade by reversing the edge in contact with the floor until all four edges are worn out, or replace with a new blade, fitting it onto the screws on the body of the squeegee.
 Reposition the two blade pressing devices by centering the wider part of the slots on the squeegee body fastening pins, then push the blade pressing devices inwards.
 Close the hook again.
 Replace the squeegee on its support, following the instructions described previously.

